

Your Request:

- 1) Please name the organisation(s) that deliver(s) CYP (children and young people) ADHD assessment / diagnoses in your ICB area**
 - a) When did the contract(s) begin and when is the contract(s) due to end**
 - b) What is the annual spend for this service for 2022, and for the last 5 years?**
 - c) How is the service contracted – is it Block, Activity-based, or AQP contracting?**
 - d) If the service is commissioned with other CCGs, ICSs or Trusts, which are these?**
 - e) At what prevalence (% of the child population) have the contracts been commissioned against?**

- 2) Does the same organisation as for Question 1 also deliver CYP ADHD prescriptions and post-diagnosis ADHD support in your ICB area? If not, please provide the same information for this organisation.**

- 3) Please outline the CYP ADHD pathway in your area, including key referral sources**

- 4) How many children and young people are currently waiting for a CYP ADHD assessment in your area? What is the longest and median wait time from a referral?**
 - a) Within the last year, how many children and young people were assessed within 12 weeks of referral?**
 - b) Within the last year, how many children and young people were discharged without assessment?**
 - c) Please answer Questions 4, 4a, 4b for as many historic years as possible, up to 5 years**

- 5) For the last 5 years, please give the number of CYP patients per year in the ICB who were:**
 - a) Referred for ADHD assessment**
 - b) Given an ADHD assessment**
 - c) Given an ADHD assessment from a 'Right to Choose' provider, outside the service contracted**
 - d) Diagnosed with ADHD**

- 6) For the last 5 years, what was the average number of ADHD-qualified staff delivering services in the area? How does this split by role:**
 - a) Qualified psychiatrists**
 - b) Paediatricians**
 - c) Speech and Language therapists**

d) Clinical Psychologists

e) For a-d, please also give numbers of trainees

7) Please provide equivalent answers for Questions 1-6, but for Adult ADHD services in the ICB. If the ICB does not distinguish between CYP and Adult ADHD services, please answer Questions 1-6 for all patients collectively

Our Response:

Please find listed below the information held in relation CYP and adult ADHD services for each of the former CCG areas that now make up NHS Cheshire & Merseyside ICB:

Cheshire

1) Please find listed below the commissioned providers of CYP ADHD assessment and diagnosis services in Cheshire:

- *Cheshire & Wirral Partnership NHS Foundation Trust (CWP).*
- *Mid Cheshire Hospitals NHS Foundation Trust (MCHT).*
- *Countess of Chester Hospital NHS Foundation Trust (CoCH).*
- *Bridgewater Community Healthcare NHS Foundation Trust (BCHFT).*

1a) April 2022 (rolling) for all commissioned providers.

1b) All services commissioned as part of a block contract for a wide range of NHS healthcare services with not separately designated cost for the CYP ADHD assessment/diagnosis element.

1c) Block Contract.

1d) No.

1e) The service is not commissioned based on prevalence figure.

2) Yes.

3) Please find enclosed a copy of 'Cheshire ADHD Pathway' which details the referral pathway for CYP ADHD.

4 – 4c) Information not held*.

5a - 5d) Information not held*.

6- 6e) Information not held*.

7.1) Cheshire & Wirral Partnership NHS Foundation Trust (CWP) Trust is the commissioned provider of adult ADHD assessment services. There is also a Prior Approval Interim pathway using independent providers is in place in Cheshire due to capacity issues within the commissioned provider.

7.1a) April 2022 (rolling).

7.1b) Service commissioned as part of a block contract for a wide range of NHS healthcare services with not separately designated cost for the adult ADHD assessment element.

7.1c) Block contract.

7.1d) No.

7.1e) The service is not commissioned based on prevalence figure.

7.2) Yes.

7.3) Please find enclosed a copy of 'Cheshire ADHD Pathway' which details the referral pathway for adult ADHD.

7.4 - 7.4c) Information not held*.

7.5a - 7.5d) Information not held*.

7.6a – 7.6e) Information not held*

Halton

1) Bridgewater Community Healthcare NHS Foundation Trust.

1a) April 2022 (rolling).

1b) Service commissioned as part of a block contract for a wide range of NHS healthcare services with not separately designated cost for the CYP ADHD assessment element.

1c) Block Contract.

1d) No.

1e) The service is not commissioned based on prevalence figure and is commissioned to meet demand.

2) Bridgewater Community Healthcare NHS Foundation Trust deliver CYP ADHD prescriptions. Advance Solutions to provide post-diagnosis support service offer for parents and carers of children and young people with ADHD.

3) The referrer to the Halton CYP Neurodevelopment Assessment and Diagnosis Service will work with the family and the child to offer support up until and after a referral has been triaged. The referrer directs parents/child to the local offer website including ADDvanced Solutions (pre/post diagnosis support) throughout the process. Bridgewater Community Health Care Foundation Trust provide the Assessment and Diagnosis Service. Advanced Solutions provide post diagnostic support to parents and carers. Key referral sources are; Education, School Nurses, GP Practices, Health Visitors, Social Care, Children Centres, Hospital based Paediatric Services, and CAMHS.

4 - 4c) Information not held*.

5a) 166 referrals for ADHD and 160 referrals for ADHD & Autism during 2021. 450 referrals during 2022.

5b) Information not held*

5c) Nil.

5d) Information not held*.

6- 6e) Information not held*.

7.1) Mersey Care NHS Foundation Trust.

7.1a) April 2022 (rolling).

7.1b) Service commissioned as part of a block contract for a wide range of NHS healthcare services with not separately designated cost for the adult ADHD assessment element.

7.1c) Block contract.

7.1d) No.

7.1e) The service is not commissioned based on prevalence figure and is commissioned to meet demand.

7.2) Mersey Care NHS Foundation Trust deliver adult ADHD prescriptions.

7.3) Individuals are referred to the Halton Adult ADHD Assessment, Diagnosis and Treatment Service. Once diagnosed, Mersey Care will prescribe medicines and monitor until the patient is stable. GP practice will then take over monitoring via shared care arrangement. If the patient requires mental health support, they will be referred on as appropriate to the Mersey Care Mental Health Support Service. Key referral sources are GP Practices, Adult Community Health Services, and Mental Health Services.

7.4) As of the end of October 2022 (the most recent data held), there were 162 adults awaiting assessment. Data not held on longest/median waiting times from referral not held.

7.4a) Between 01 April 2022 to 31 October 2022, 37 adults had a first appointment for ADHD assessment within 12 weeks of referral. During the 2021/22 financial year, 189 adults had a first appointment for ADHD assessment within 12 weeks.

7.4b) Nil. However, between 01 April 2022 to 31 October 2022 there have been 2 inappropriate referrals. During the 2021/22 financial year there were 25 inappropriate referrals.

7.4c) Information not held*.

7.5a) From 01 April 2022 to 31 October 2022, there were 318 referrals. During the 2021/22 financial year there were 404 referrals.

7.5b - 7.5d) Information not held*.

7.6a – 7.6e) Information not held*

Knowsley

1) Alder Hey Children's Hospital NHS Foundation Trust (AHCH).

1a) April 2022 (rolling).

1b) Service commissioned since April 2022, total spend for the 2022/23 financial year was £344,400.

1c) AQP.

1d) No.

1e) Average referrals locally and sub regionally is 25 per month.

2) Yes.

3) Referrals from professionals directly to AHCH ADHD Service or onward referral from CAMHS if assessment indicated and Autism pathway provider if assessment indicated. Main referrers are schools, followed by GPs.

4 – 4c) Information not held*.

5a - 5d) Information not held*.

6 - 6e) Information not held*.

7.1) Mersey Care NHS Foundation Trust

7.1a) April 2022 (rolling).

7.1b) Service commissioned as part of a block contract for a wide range of NHS healthcare services with not separately designated cost for the adult ADHD assessment element.

7.1c) Block contract.

7.1d) No.

7.1e) The service is not commissioned based on a prevalence figure.

7.2) Yes.

7.3 - 7.6) Information not held*.

Liverpool

1) Alder Hey Children's Hospital NHS Foundation Trust

1a) April 2013 (rolling).

1b) Service commissioned as part of a block contract for a wide range of NHS healthcare services with not separately designated cost for the CYP ADHD assessment element.

1c) Block Contract.

1d) No.

1e) Contracts have been commissioned to meet rising demand for assessment and diagnosis and not based on prevalence. Locally 1% of our registered population has a diagnosis of ADHD.

2) Alder Hey Children's Hospital NHS Foundation Trust deliver CYP ADHD prescriptions and follow up review appointments. A social model of post diagnostic support for Children and Young People is provided by ADHD Foundation.

3) Please find enclosed '*A guide to supporting children, young people and their families in Liverpool living with neurodevelopmental needs*' which details the Children and Young Peoples neurodevelopmental conditions local offer (ASD and ADHD) for Liverpool.

4 - 4c) Information not held*.

5a - 5b) Information not held*.

5c) 1,684 – However, unable to break down by year/age.

5d) Information not held*.

6- 6e) Information not held*.

7.1) Cheshire & Wirral Partnership NHS Foundation Trust (CWP).

7.1a) April 2013 (rolling).

7.1b) Please find listed below the spend on CWP Adult ADHD Service for the 2017/18 to 2022/23 financial years.

2017-2018: £209,837

2018-2019: £296,120

2019-2020: £325,885

2020-2021: £600,095

2021-2022: £615,147

2022-2023: £710,091

7.1c) Block contract.

7.1d) No.

7.1e) Contracts have been commissioned to meet rising demand for assessment and diagnosis and not based on prevalence. Locally for 0–25-year-olds this is 2%.

7.2) Cheshire & Wirral Partnership NHS Foundation Trust deliver Adult ADHD prescriptions and follow up review appointments. A social model of post diagnostic support for adults is provided Ladders of Life.

7.3) Please find enclosed '*Liverpool Adult ADHD Pathway*' which details the referral pathway for adult ADHD assessments.

7.4 - 7.4c) Information not held*.

7.5a - 7.5b) Information not held*.

7.5c) 1,684 – However, unable to break down by year/age.

7.5d) Information not held*.

7.6a – 7.6e) Information not held*

Sefton/Southport & Formby

1) Alder Hey Children's Hospital NHS Foundation Trust

1a) April 2022 (rolling).

1b) Service commissioned as part of a block contract for a wide range of NHS healthcare services with not separately designated cost for the CYP ADHD assessment element.

- 1c) Block Contract.
- 1d) No.
- 1e) Commissioned activity based on presenting demand, rather than specifically by prevalence.
- 2) Yes.
- 3) Information not held* .
- 4) As of November 2022 (the most recent data held), there were 987 CYP patients waiting for an ADHD assessment. The longest wait is 129 weeks, with 55.8% concluded in under 30 weeks.
- 4a) 100% of cases are triaged within 12 weeks (as per NICE) and assessment started if appropriate.
- 4b – c) Information not held*.
- 5a - 5d) Information not held*.
- 6 - 6e) Information not held*.
- 7.1) Mersey Care NHS Foundation Trust.
- 7.1a) April 2022 (rolling).
- 7.1b) Service commissioned as part of a block contract for a wide range of NHS healthcare services with not separately designated cost for the adult ADHD assessment element.
- 7.1c) Block Contract.
- 7.1d) No.
- 7.2) Mersey Care NHS Foundation Trust deliver prescriptions.
- 7.3 - 7.6) Information not held*.

St Helens

- 1) St Helens and Knowsley Teaching Hospitals NHS Trust.
- 1a) April 2022 (rolling).
- 1b) Service commissioned as part of a block contract for a wide range of NHS healthcare services with not separately designated cost for the CYP ADHD assessment element.
- 1c) Block.
- 1d) No.
- 1e) Not commissioned based on prevalence.
- 2) Yes.
- 3) Part of the multi-agency neurodevelopmental pathway with referrals from GPs and Schools based on pre-referral graduated approach having been applied. Referrals direct to Developmental Paediatrics via NDP co-ordination team following triage of referral and acceptance, with input for assessment from other MA services as appropriate. If referral accepted, parents are signposted to our VCS provider for parent support and awareness raising, plus links with school for advice and guidance.
- 4 - 7.6) Information not held*.

Warrington

- 1) Bridgewater Community Healthcare NHS Foundation Trust.
- 1a) April 2023 – March 2024 (rolling).
- 1b) Service commissioned as part of a block contract for a wide range of NHS healthcare services with not separately designated cost for the CYP ADHD assessment element.

- 1c) Block Contract.
- 1d) No.
- 1e) The service is not commissioned based on prevalence figure and is commissioned to meet demand.
- 2) Yes.
- 3) Warrington CYP Neuro-developmental Pathway – single point of access from any provider.
- 4) As of November 2022 (the most recent data held), there were 817 awaiting assessment, with the longest wait 55 weeks. Information not held on the median waiting time from referral.
- 4a - 4c) Information not held*.
- 5 - 5d) Information not held*.
- 6- 6e) Information not held*.
- 7.1) Quay Healthcare (Warrington Primary Care CiC).
- 7.1a) Two year pilot commenced during 2020.
- 7.1b) Spend for 2022 was £176,852.
- 7.1c) Block.
- 7.1d) No.
- 7.1e) The service is not commissioned based on prevalence figure and is commissioned to meet demand.
- 7.2) Mersey Care NHS Foundation Trust deliver prescriptions.
- 7.3) Referrals would be made via self, or professionals such as GP, MH services. Primary Care ADHD team would assess, diagnose, commence / titrate medication, review and then engage in shared care arrangements with primary care.
- 7.4) Currently there were 760 adults awaiting assessment. The longest wait is 48 weeks, the median wait is 21 weeks and 3 days.
- 7.4a) In the last year no patients were assessed within 12 weeks of referral.
- 7.4b) 6 due to not attending.
- 7.4c) Information not held*.
- 7.5a - 7.5d) Information not held*.
- 7.6a – 7.6e) Information not held*

Wirral

- 1) Wirral Community NHS Foundation Trust (Pre-diagnostic pathway assessments). Wirral University Teaching Hospital NHS Foundation Trust Community Paediatrics Department (Diagnosis). Children with MH conditions may also be diagnosed at via CAMHS provided by Cheshire & Wirral Partnership NHS Foundation Trust.
- 1a) The service from Wirral Community NHS Foundation Trust are commissioned by Public Health, you may therefore wish to redirect your request for information relating to this contract to Wirral Council who can be contacted via: ww3.wirral.gov.uk/crmservicerequests/scripts/ServiceRequestMain.asp. The services from Wirral University Teaching Hospital NHS Foundation Trust and Cheshire & Wirral Partnership NHS Foundation Trust began in April 2022 and is due for renewal in March 2024.
- 1b) Services from Wirral University Teaching Hospital NHS Foundation Trust and Cheshire & Wirral Partnership NHS Foundation Trust commissioned as part

of a block contract for a wide range of NHS healthcare services with no separately designated cost for the CYP ADHD assessment element.

1c) Services from Wirral University Teaching Hospital NHS Foundation Trust and Cheshire & Wirral Partnership NHS Foundation Trust commissioned as part of a block contract.

1d) No.

1e) The service is not commissioned based on prevalence figure.

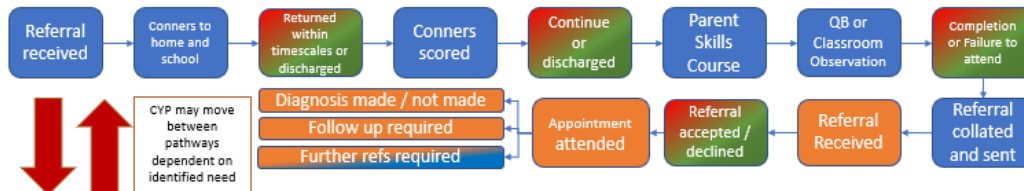
2) Yes. GPs can also provide prescriptions under shared care once CYP are stable on medication.

3)

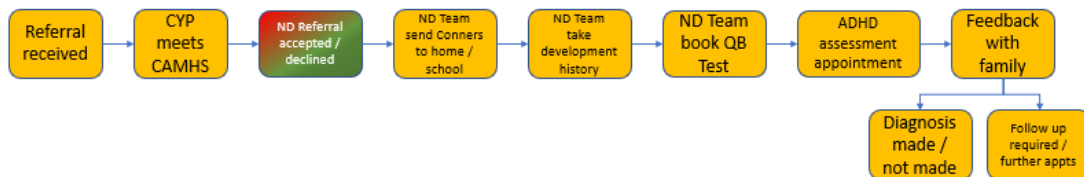
Wirral Place ND Pathway - ADHD



CYP without comorbid MH difficulties pathway (via 0-19 team and community paediatrics)



CYP with comorbid MH difficulties pathway (via CAMHS)



Published Dec 22. Pathways are currently under review and redesign

A breakdown of the referral sources can be obtained via Wirral Community NHS Foundation Trust*.

4 - 6e) Information not held*.

7.1) Cheshire & Wirral Partnership NHS Foundation Trust (CWP).

7.1a) Annual rolling contract for over five years.

7.1b) Commissioned as part of a block contract for a wide range of NHS healthcare services with no separately designated cost for the adult ADHD assessment element.

7.1c) Block.

7.1d) No.

7.1e) The service is not commissioned based on prevalence.

7.2) Yes.

7.3) Referrals predominantly come via the patient's GP, but other professionals in other services such as mental health services etc. can also make a referral into the CWP service. This is then directed to the CWP team for triage and potential assessment and on-going care

7.4 - 7.6e) Information not held*

*You may wish to redirect your request for this information to the commissioned providers of ADHD CYP and ADHD Adult assessments for the former CCG areas listed below, along with their contact details:

Cheshire

- *Cheshire & Wirral Partnership NHS Foundation Trust (CYP ADHD & Adult ADHD)*
cwp.foi@nhs.net
- *Mid Cheshire Hospitals NHS Foundation Trust (CYP ADHD)*
foi.foi@mcht.nhs.uk
- *Countess of Chester Hospital NHS Foundation Trust (CYP ADHD)*
foi.enquiries@coch.nhs.uk
- *Bridgewater Community Healthcare NHS Foundation Trust (CYP ADHD)*
bchft.foi@nhs.net

Halton

- *Bridgewater Community Healthcare NHS Foundation Trust (CYP ADHD)*
bchft.foi@nhs.net
- *Mersey Care NHS Foundation Trust (Adult ADHD)*
FOI@merseycare.nhs.uk

Knowsley

- *Alder Hey Children's Hospital NHS Foundation Trust (CYP ADHD)*
FOIRequests@alderhey.nhs.uk
- *Mersey Care NHS Foundation Trust (Adult ADHD)*
FOI@merseycare.nhs.uk

Liverpool

- *Alder Hey Children's Hospital NHS Foundation Trust (CYP ADHD)*
FOIRequests@alderhey.nhs.uk
- *Cheshire & Wirral Partnership NHS Foundation Trust (Adult ADHD)*
cwp.foi@nhs.net

Sefton/Southport & Formby

- *Alder Hey Children's Hospital NHS Foundation Trust (CYP ADHD)*
FOIRequests@alderhey.nhs.uk
- *Mersey Care NHS Foundation Trust (Adult ADHD)*
FOI@merseycare.nhs.uk

St Helens

- *St Helens & Knowsley Teaching Hospitals NHS Trust (CYP ADHD)*
foirequests@sthk.nhs.uk

- *Haydock Medical Centre (Adult ADHD)*
<https://www.haydockmc.com/contact>

Warrington

- *Bridgewater Community Healthcare NHS Foundation Trust (CYP ADHD)*
bchft.foi@nhs.net

- *Quay Healthcare (Adult ADHD)*
<https://quayhealthcare.org/contact-us/>

Wirral

- *Wirral Community NHS Foundation Trust (CYP ADHD)*
wcnt.foi@nhs.net

- *Wirral University Teaching Hospital NHS Foundation Trust (CYP ADHD)*
wih-tr.AccessToInformationOffice@nhs.net

- *Cheshire & Wirral Partnership NHS Foundation Trust (CYP ADHD)*
cwp.foi@nhs.net

- *Cheshire & Wirral Partnership NHS Foundation Trust (Adult ADHD)*
cwp.foi@nhs.net

Enc: - *Cheshire ADHD Pathway*

- *A guide to supporting children, young people and their families in Liverpool living with neurodevelopmental needs*
- *Liverpool Adult ADHD Pathway*



FOI00204CMICB -
Enclosures.pdf