

CAMRIN OUT & ABOUT

We have had a busy few months in CAMRIN, out and about promoting the excellent work you have all been doing collaboratively within the Network.

We are sharing the highlights in this issue of CAMRIN News, these include hosting a stand at the UK Imaging and Oncology (UKIO) Conference in Liverpool, attending the National Radiology Managers Conference in London, and presenting our collaborative approach to Artificial Intelligence (AI) at the NHS Radiology North Conference. In addition to Dr Nik Barnes, who has recently been appointed as CAMRIN's Clinical Lead for Business Intelligence, Digital, & Procurement, and I, speaking at a seminar hosted by the North West Imaging Academy Training Hub at the end of June about 'Hot Topics in Clinical Imaging'.

At UKIO CAMRIN joined forces with Greater Manchester and Lancashire & South Cumbria, to exhibit as the 'North West Imaging Networks'

David White CAMRIN Clinical Lead



at UKIO 2023. There were many visitors to our stand, and we used the opportunity to share the excellent work we have all been involved in as a Network. We presented the North West as an exciting, vibrant and forward thinking place to come and work and develop your career.

We know this is a difficult time for the NHS with staff strikes across the board, departments have supported their staff and are doing their best to manage the waiting lists accordingly.

If you would like us to come and visit you in your department please [get in touch](#).

David White,
Clinical Lead, CAMRIN.

STAFF APPOINTMENTS ACROSS THE NETWORK

Faye Sefton, Programme Manager

Dr Nik Barnes, CAMRIN Clinical Lead for Business Intelligence, Digital, & Procurement

Dr Sacha Niven, CAMRIN Deputy Clinical Lead/Lead for Clinical Reference Group & Workforce

CAMRIN PMO

Lisa McManamon, Radiographer

Neil Fanning, Lead CSI Radiographer

Retired – Julie Smith, Lead Sonographer

Alder Hey Children's NHS Foundation Trust (AH)

Dr Ahmed Kharabish, Clinical Lead for Radiology

Kiran Chhokar, Divisional Director of Operations for Clinical Services

Liverpool Heart and Chest Hospital NHS Foundation Trust (LHCH)

Michelle Moody, Site Manager

Stephanie Rose, MRI Lead

Sammy McNeil, CT Lead

Paddington Community Diagnostic Centre (CDC)

Jurate Noreikaite, Consultant (GI)

Dhagash Patel, Consultant (Paeds)

Wirral University Teaching Hospital

NHS Foundation Trust (WUTH)



MEET... TOM HILL

Programme Manager



WHAT IS YOUR ROLE WITHIN CAMRIN:

I am a programme manager within the CAMRIN.

SOMETHING YOU MAY NOT KNOW ABOUT ME:

I previously trained and worked as a Chemical Engineer.

WHAT ARE YOU EXCITED ABOUT:

I manage a variety of projects as part of the transformation, business intelligence and digital programmes. I am very excited to be leading CAMRIN's approach to Artificial Intelligence and implementing this into radiology workflows.

WHAT IS YOUR WORK HISTORY:

I previously worked for NHS England in the North-West region as part of the COVID response, working as part of the incident coordination centre to help organise the vaccine roll-out.

UKIO NW IMAGING NETWORK STAND



This year's UK Imaging and Oncology Congress took place between 5th and 7th June in Liverpool, CAMRIN joined forces with Greater Manchester (GM) and Lancashire & South Cumbria (L&SC), to exhibit as the North West Imaging Networks at UKIO 2023.

We showcased our fantastic, collective work in imaging across our Networks via posters and case studies and raised awareness of the North West, including the many things it has to offer as a place to live as well as work. We also built on the excellent working relationships we have across the North West.

On the stand we had representatives from both Clinical leadership and Project / Programme Managers, who were able to answer questions, update on benefits achieved and build relationships with product suppliers. There was a great deal of interest in our stand over the three days and colleagues from both NHS and commercial organisations were keen to learn more about Imaging Networks in general, as well as our work more specifically, our approaches, any advice / experience we could share and our aspirations for the future, including the use of technology and innovation.

The National Diagnostics Team visited the stand and noted how collaboratively we are working within the North West. Thank you to our CAMRIN Trust colleagues who visited the stand too, as we were really pleased to see some familiar faces. It was also a chance for the central network team to get to know our GM and L&SC colleagues better and spend more time considering what we could benefit from working more closely on, and what experience / learning we can share with each other where similar projects are going to be implemented. We've already had some really helpful discussions for specific projects as a result. It has also opened our eyes to some of the technology and innovation currently available and gave us some food for thought for the future.

As the 'North West Imaging Networks' we felt that it was a very worthwhile event and we will definitely consider exhibiting at other events in the future, to further promote the work we are doing and encourage people to consider the North West as a place to live and work.

If you have any suggestions on events we should consider, please do [get in touch with the team](#).

SOMETHING YOU MAY NOT KNOW ABOUT ME:

I attained my Open Water scuba diving qualification during a trip to Thailand.

WHAT IS YOUR ROLE WITHIN CAMRIN:

I have joined the network as a Programme Co-Ordinator.

MEET... JAMES GREEN

Programme Co-Ordinator



WHAT IS YOUR WORK HISTORY:

Initially I worked within the private sector implementing SaaS platforms as part of an international recruitment outsourcing firm, before joining the NHS during the pandemic as the non-clinical lead rolling out the vaccine programme across Shropshire. As the vaccination programme came to an end, I moved into the Staffordshire & Shropshire Health Informatics Service, as a project coordinator supporting the digital infrastructure projects across numerous NHS Trusts, before moving into my current role as a Programme Co-Ordinator within CAMRIN.

WHAT ARE YOU EXCITED ABOUT:

As a non-clinical member of staff, it's great to be part of a team whereby our work has a direct impact on improving patient care for those within my local community and the wider region.

NATIONAL RADIOLOGY MANAGERS CONFERENCE

Since 2011, the 'National Radiology Managers Conference' or 'NRMC' has become a popular annual meeting for Radiology Managers, providing information and support, stimulating discussion, and offering great networking opportunities. The conference is held in London and organised collaboratively between The Society of Radiographers and Philips Healthcare, with a broad range of presentations, panels, and supplier exhibitions.

This year, Carol Cunningham and Yvonne Shanks attended the conference, along with a few other colleagues from Cheshire and Merseyside. It was a fantastic opportunity to meet colleagues that we see over MS Teams, but rarely have the opportunity to meet up with and to find out about new offerings from suppliers.

This year's theme was 'Compassionate and Sustainable Leadership: Paths to Success'. Aware that imaging services are still affected by Covid-19 and continuing workforce shortages, this meeting provided an opportunity for individuals that have managed to grow their teams, inspire, and retain them, to showcase how they have done this, to support others in taking a similar approach.

Richard Evans OBE, the CEO of The Society and College of Radiographers welcomed attendees to the meeting, then Mark Leftwich, Managing Director for Philips UKI thanked everybody for attending and outlined Philips priorities, as follows: Improving access via CDCs; Upgrades to extend asset life; Sustainability; Digitisation; Artificial Intelligence (AI); Software; and Connectivity across patient pathways. He told the group that their new BlueSeal MR scanners only require 0.5% of the helium required by their conventional MR systems, which is a major advance, due to the scarcity and high cost of helium.

The keynote speaker, Professor Michael West CBE set the scene perfectly with his presentation on Compassionate Leadership. He spoke about the need for this as levels of stress and burnout in NHS staff are higher than ever. He linked the four behaviours of compassion with leadership, as follows:



1. ATTENDING - BEING PRESENT WITH AND FOCUSING ON OTHERS – 'LISTENING WITH FASCINATION'

2. UNDERSTANDING - TAKING TIME TO EXPLORE AND UNDERSTAND SITUATIONS PEOPLE ARE STRUGGLING WITH



3. EMPATHISING - MIRRORING AND FEELING COLLEAGUE'S DISTRESS, FRUSTRATION, AND JOY

4. HELPING - TAKING THOUGHTFUL AND INTELLIGENT ACTION TO SUPPORT INDIVIDUALS AND TEAMS.

Professor West reiterated that compassionate leadership increases staff engagement and satisfaction, resulting in better outcomes for organisations including improved financial performance (Dawson and West 2018), and staff that are treated with compassion are better able to direct their support and care giving to others (Goetz et al 2010).

There was also a panel discussion about 'Environmental sustainability in imaging services' – being mindful about the products and packaging we use and reducing our carbon impact by considering patient scheduling and journeys. Linda Hindle OBE, Deputy Chief Allied Health Professional for England, highlighted the role of AHPs in developing a [net zero NHS](#). To find out more, read Linda's blog article on '[AHPs celebrating Greener AHPs Week, with a focus on the links between climate change and public health](#)'.

Additionally, there were a series of case studies and presentations on Innovation in practice, Community Diagnostic Centre (CDC) development and training opportunities, [The College of Radiographers Education and Career Framework](#), and professional development in the workplace.

Kerry Mills, NHS England's National Lead for Cancer and Diagnostics, spoke about the Radiology Manager's power position as the critical connector in developing the workforce and challenged us to consider our Critical Connectors. So we'd like to ask our readers do you know a Critical Connector, or are you in a Critical Connector role, and if so, how do you feel we can develop these purposeful connections? To share your thoughts, please [email the CAMRIN team](#) directly.

Last but not least, the conference was closed by Richard Evans, and delegates had some time to network and to visit suppliers stands, before catching their trains home. To access conference reports and presentations or to find out more about the upcoming 'National Conference for Radiology Managers' (NCRM), please visit [The Society of Radiographers website](#).

CONVENIS AI CONFERENCE

Following on from the success of CAMRIN presenting their 'Journey to a Collaborative Network' at the 2022 Convenis NHS Radiology Conference North, we were asked once again to share our knowledge and experience with other NHS imaging professionals. This time the subject was AI and Machine Learning in Radiology.

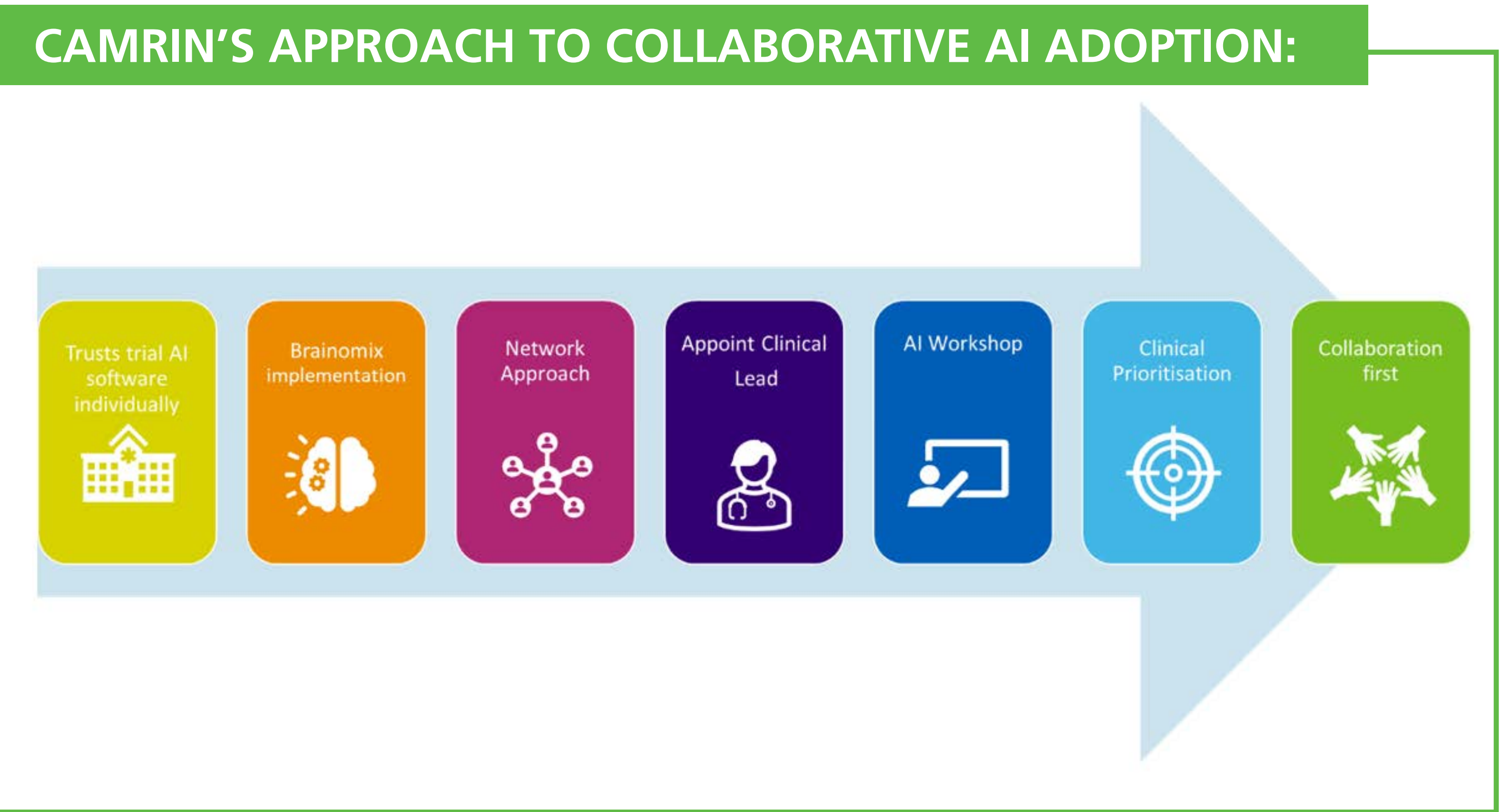
The CAMRIN team is aware of the positive impact that our portfolio of work realises for radiology services in Cheshire and Merseyside in providing efficiencies and improvements, to enable staff within Trusts to work to the best of their ability

and ultimately provide a better patient experience, so we are keen to share the excellent collaborative work that the Network delivers.

Dr David White (Consultant Radiologist & Chief Clinical Information Officer at Liverpool University Hospitals and Clinical Lead, CAMRIN) and Thomas Hill (Programme Manager, CAMRIN) took up the mantle of sharing the excellent work CAMRIN is doing on AI, the subject of the presentation was 'CAMRIN's Approach to Collaborative AI Adoption'.



The presentation covered the increasing role that AI has in radiology services and how CAMRIN have developed a single approach to ensure that AI adoption in the Network is collaborative. Dr White spoke of our experience implementing Brainomix e-CTA, which analyses CT angiography images for suspected stroke patients, our lessons learnt and our successes. Thomas went on to share our approach to implementing new applications and the many projects we have that support the implementation of AI across the Network. This includes the exciting project looking to implement AI Rad Companion for prostate MR reporting, which is being piloted at LUHFT, that has the potential to increase reporting capacity and improve patient outcomes.



If you'd like to find out more about the Prostate AI Project, which sits underneath the Cheshire and Merseyside Radiology Imaging Network's Digital Programme, please contact Thomas Hill, Programme Manager for the Network, who is leading on these AI workstreams, by emailing camrin@liverpoolft.nhs.uk.

HOT TOPICS IN CLINICAL IMAGING



Introduced by Gill Holroyd
Clinical Professional Lead
North West Imaging Academy Training Hub
@ Edge Hill University Medical School



Last month, healthcare professionals involved in clinical imaging were invited to attend an evening seminar about 'Hot Topics in Clinical Imaging'. The seminar was hosted by the North West Imaging Academy Training Hub and was made up of four vignettes that were delivered by experts in the field of imaging, all of which you can read more about and view recordings of, via the links below.

The first session by Helen Watts, NHS England Radiography Clinical Fellow (Cancer and Diagnostics), explored '[Advanced and enhanced practice in clinical imaging](#)'. Asking why radiographers are behind the curve when it comes to accessing courses that prepare them for roles as advanced practitioners and what they can do to attain the four pillars of enhanced clinical practice.

This session was followed by Dr Nik Barnes, Clinical Lead for CAMRIN'S Business Intelligence, Digital, and Procurement Programmes, who presented on '[the use of Artificial Intelligence \(AI\) in Imaging](#)'. With a focus on whether AI technology can ever 'replace' the human, if it'll ever replace a radiologist, and what AI can be used for in imaging departments both now and in the future.

Leading on from this, the third session was given by CAMRIN'S Clinical Lead Dr David White, who discussed '[Direct Access to Diagnostic Imaging by GPs](#)', providing a holistic view on both the impact on departments and the benefits to patients. Whilst the final session on Depleted Sonographer workforce was given by Khalida Wilson, Senior Diagnostic Workforce Manager, at NHS England (video still to be shared on the NW Imaging Academy's platforms).

You can find out more about upcoming events being held by the North West Imaging Academy, by following their [Eventbrite page](#), [LinkedIn page](#), or by [visiting their website](#).

CHECK OUT OUR CAMRIN CASE STUDY POSTERS!

We had a number of CAMRIN case study posters professionally designed, and printed, which we displayed at our North West Imaging stand at UKIO. These included case study posters for the following areas of work:

- Brainomix Stroke AI
- CAMDASH
- CAMRIN
- Collaborative Medical Physics Service
- Diagnostic IT Network
- Diagnosing Poor Flow in Plain Film Imaging
- International Recruitment of Diagnostic Radiographers
- Other Ologies PACS
- Professional Development in PACS
- Radiology Out of Hours Reporting Hub.

You can view and download copies of these case studies, [online via our website](#), or by scanning the QR code below. Additionally, if you would like an update on any of the projects included in the CAMRIN posters listed above, please [contact the CAMRIN team](#) directly.

DOWNLOAD
A COPY TO KEEP!



No time to read everything?

Why not scan the QR code below and download your own copy to read at your convenience?

SCAN THE QR CODE TO VIEW AND DOWNLOAD OUR CASE STUDIES



Congratulations to radiographers Steph Hanna, Melissa McAdam, and Katie Sharkey from Liverpool University Hospitals NHS Foundation Trust who were the winners of our 'MRI Chocolate Bar Quiz' at UKIO.

A big thank you to everyone who entered the competition and to Kath Tyler, Sue Kiel, and Dr Kumar Das from The Walton Centre NHS Foundation Trust for your support in providing the images that we utilised within the quiz.

PACS CLOUD PROJECT UPDATE

Our PACS Cloud project, and the new IT network which will host it, are moving along with some delays out of our control due to the availability of BT Openreach.

We have now completed the Philips Roadshows to demonstrate future functionality with centrally hosted PACS, with Q&As at all sessions. Great discussion points were made, and the PACS project launch meetings with local Trusts began on 4th July, and we've had three sessions to date.

We are working through combined streamlined system settings for the central cloud PACS with PACS managers in the region, which is going well, and all of the Cheshire and Merseyside Trusts are engaged, and collaboration is effective.

Key roles are identified:

- Programme managers
- Dr Pete Rowlands - Clinical Lead
- Dr Nik Barnes - Digital Lead
- David McCreavy – Clinical Safety Officer
- Operational Lead – Unfilled

If anyone is interested in being the Operational Lead, please [email the CAMRIN team](#).

The ideal candidate would be someone who is already working at a Cheshire and Merseyside NHS Trust, in a Radiology or Diagnostic service lead role, or similar, and is involved in the design, implementation, and operational management of the Radiology PACS and RIS systems and associated workflow/s. As their strategic vision, technical expertise, and operational acumen will be key in shaping this System-level PACS Cloud project.

The chosen candidate will join the monthly 'Digital Diagnostic Network/PACS Programme Board', which will be responsible for the overall decision making for the PACS Cloud project on behalf of Cheshire and Merseyside Trusts. Enabling them to be a part of shaping the management and direction of the project.



NATIONAL MEDICAL DIRECTOR VISITS CHESHIRE AND MERSEYSIDE

National Medical Director Prof Sir Stephen Powis visited Cheshire and Merseyside to find out how innovations are helping to improve health outcomes for local patients.

Prof Powis, who became a household name during the COVID-19 response when he appeared alongside politicians and fellow health leaders on national Coronavirus briefings, visited a number of NHS primary and secondary care facilities in Wirral on Friday, June 23rd.

Following a visit to Eastham Group Practice, led by NHS England's Regional Medical Director for Primary Care Dr Paula Cowan, Prof Powis toured a Community Diagnostic Centre and neighbouring Cheshire and Merseyside Surgical Centre at Clatterbridge Hospital.

Joined by local NHS leaders, including NHS Cheshire and Merseyside Chief Executive Graham Urwin, he then visited Arrowe Park Hospital to tour the new dialysis unit and the site of the new A&E.

Dr Paula Cowan, NHS England's Regional Medical Director for Primary Care, said: "It was a pleasure to host Prof Powis and to introduce him to not only the members of the practice team, but colleagues from across the Primary Care Network and local Pharmacy to demonstrate

new ways of integrated working in General Practice, neighborhood teams and wider Primary Care."

Janelle Holmes, Chief Executive at Wirral University Teaching Hospital, said: "We were delighted to welcome Prof Powis to our Trust and to showcase the fantastic work happening at our sites, as well as our strong leadership and partnership work in Wirral. This was a great opportunity to demonstrate the innovative projects that are already improving patient care and our exciting future projects that will further benefit the Wirral community.

"We were able, for example, to show how we are making great strides in addressing the elective surgery backlog through the new theatres at Clatterbridge, how we are speeding up access to scans and tests through the Clatterbridge Diagnostics Hub and the real progress on building a new A&E at Arrowe Park for the people of Wirral. All these projects support national NHS priorities in delivering care and making life better for patients."

[Click here to read the full story](#)



OPPORTUNITY: REPORTERS FOR RRC



We're excited to share that the pilot of the Radiology Reporting Collaborative (RRC) will be starting soon. As the CAMRIN RRC will provide additional reporting capacity to the Cheshire and Merseyside Trusts within the Network, with the intention to reduce reliance on third party outsourcing companies, to achieve a number of benefits.

However in order to set the RRC up effectively, it is essential that we have a pool of reporters available. In particular, reporting radiographers who provide plain film reporting. That said, if you currently complete extra work for an outsourcing company, have you considered getting involved in the CAMRIN RRC?

We all know the benefits gained from having images reported locally, so if you are interested in working for the RRC, or would like more information about the opportunity to be a part of the CAMRIN RRC, please [contact the CAMRIN team](#).

LISTEN: TRANSFORMING DIAGNOSTICS PODCAST



A new podcast explores the impact of changes to the way diagnostic tests and screening are carried out in Cheshire and Merseyside. The Innovation Agency podcast features Liz Bishop and Dr Ash Bassi.

Liz is Chief Executive of The Clatterbridge Cancer Centre NHS Foundation Trust; lead for the Cheshire and Merseyside Diagnostic Transformation Programme; and Senior Responsible Officer for Cheshire and Merseyside Cancer Alliance. And Dr Ash Bassi

is Consultant Gastroenterologist and Divisional Medical Director at Mersey and West Lancashire Teaching Hospitals NHS Trust; Clinical Lead for the Cheshire and Merseyside Endoscopy Network; and North West Transformation Lead for Endoscopy.

[Click here to listen to the podcast](#)

PADDINGTON VILLAGE COMMUNITY DIAGNOSTIC CENTRE OPENS!



People in Liverpool will now benefit from faster access to vital tests and scans for a wide range of health conditions, with the opening of a new NHS community diagnostic centre on the Paddington Village development in Edge Hill, which will be owned and operated by The Clatterbridge Cancer Centre NHS Foundation Trust on behalf of the NHS in Cheshire and Merseyside.

The new Paddington Community Diagnostic Centre (CDC) offers tests to people referred by health professionals to check for a wide range of conditions including musculoskeletal problems, gastrointestinal conditions, lung conditions, and cancer. It will help them get a confirmed diagnosis so they can begin the treatment they need or to get the all-clear, putting their minds at rest.

Dr Liz Bishop, Chief Executive of The Clatterbridge Cancer Centre NHS Foundation Trust and SRO for Diagnostics in Cheshire and Merseyside, said: "People in Liverpool are more likely to experience ill health than the national average so it's particularly important that they can get the tests they need when symptoms develop.

"Faster and earlier access to tests thanks to community diagnostic centres like this will mean people with potentially serious conditions – and those living with pain or other symptoms – can get diagnosed and

start treatment more quickly, giving them a better quality of life and a better chance of a successful outcome.

"Paddington Community Diagnostic Centre will help people with many different kinds of health conditions and we feel a real responsibility as a leading specialist trust to develop services like this that support the wider NHS and the communities we serve across Cheshire and Merseyside."

Cheshire and Merseyside has been at the vanguard of rolling out CDCs as part of a national NHS England programme supported by government funding. It launched the first CDC nationally in St Helens and there are now six CDCs in our region (Ellesmere Port, Liverpool, Northwich, Southport, St Helens and Wirral), with a further three – including this one – due to open in the next six months.

[Click here to read the full story](#)



BUSINESS INTELLIGENCE

The Business Intelligence programme aims to use data analytics and performance management to generate insights and identify trends, that can be used to support care planning and service improvements, that will help to improve the efficiency of radiology imaging services across Cheshire and Merseyside. To help drive this work forwards at pace, Faye Sefton has recently been appointed to lead this programme of work, and to bring strategic focus and leadership to the projects in the programme's portfolio, including '**CAMDASH**', '**Capacity and Demand**', and '**Waiting List Recovery**'.

Since the last edition of the bulletin, the team has made exciting progress with the '**CAMDASH**' project. A project, which involves the development of a Microsoft Power BI app, that brings together a collection of dashboards, reports, and datasets from various sources. To enable key stakeholders to access near real-time 'Local' Trust-level and/or 'System' level views of radiology data, that hasn't previously been possible, and which, will facilitate a comprehensive and current perspective of Cheshire

and Merseyside radiology services. Supporting enhanced collaboration, coordination, and improved decision-making.

As the team have now chosen a design concept for '**CAMDASH**', which is currently being developed within Microsoft Power BI. This work includes the integration of dashboards for Demand, DNAs (Did Not Attends), Equipment, Workforce, and Reporting Turnaround Times, and the validation of the processes to ingest and manipulate the data contained within them.

Once this work is complete, the next steps will be to conduct a validation exercise with Trusts to ensure data accuracy, testing of the app to ensure its functionality and performance, and that any issues and risks are identified and rectified ahead of **CAMDASH** phase one being fully deployed. We will then work with Radiology Service Managers and Clinical Directors to develop additional data sets and dashboards as required to support operational requirements and to regularly update and further enhance '**CAMDASH**'.



CLINICAL PATHWAYS

As an imaging network we are faced with a multitude of clinical topics that, by working together, we can ensure that all of our patients receive a consistent high quality service, no matter where they attend for their imaging. The CAMRIN Radiology **Clinical Reference Group** was formed to provide a forum for Radiology Clinical Directors, Radiology Service Managers and Imaging Modality Leads, to cascade information and to discuss and agree what we consider to be best practice and how we should deliver it across Cheshire and Merseyside. Membership also includes the Medical Director of Cheshire and Merseyside Cancer Alliance, a patient representative, and representatives from primary care to ensure that discussions take into account all of these perspectives.

Recently, we have been concentrating on re-establishing our CAMRIN **Clinical Reference Group (CRG)**. The group will identify topics we need to tackle, and task and finish groups will be set up so that the most appropriate people can review particular areas. Recently, we have been working with the Integrated Stroke Delivery Network on implementing the National Optimal Stroke Pathway across Cheshire and Merseyside. Another group have been reviewing urological cancer imaging

and proposing standard processes and protocols to be used across the Network. At our September meeting, we will have representatives from project teams in other areas such as metastatic cord compression and emergency presentation of brain tumours. They will discuss with members of the **CRG** how imaging services contribute to diagnosis in these pathways and together agree what actions are required to ensure that the patient pathway is optimal.

Dr Sacha Niven, Consultant Radiologist and Deputy Medical Director at The Walton Centre NHS Foundation Trust has stepped into the role of Clinical Lead for the **CRG**, as well as taking up the new role of Deputy Clinical Lead for CAMRIN. He is ably assisted in his **CRG** role by Dr James Hare, Consultant Radiologist from Warrington and Halton Teaching Hospitals NHS Foundation Trust. Dr Niven is keen to visit all the CAMRIN trusts to find out what particular issues they may be facing, with a view to identifying any that could be tackled as a Network to bring about improvements. If you have any questions about the **Clinical Reference Group (CRG)** or would like to arrange a visit to your imaging department, please [email Dr Niven](#) or [email Carol Cunningham](#), Clinical Pathways Programme Manager.



TRANSFORMATION

The CAMRIN Transformation programme has progressed a lot since the last bulletin and we have some important updates to show the work that we are doing to transform radiology services in Cheshire and Merseyside.

The CAMRIN project to create the **Cheshire and Merseyside Medical Imaging Physics Service** has almost been completed, contracts have been signed between CAMRIN, The Clatterbridge Cancer Centre NHS Foundation Trust and other participating trusts to establish the service, the Clatterbridge medical physics team has used the funding from CAMRIN and the Cheshire and Merseyside Cancer Alliance to recruit a new Medical Physics Expert.

CAMRIN is also in the process of procuring and implementing an AI application into the radiology workflow at Liverpool University Hospitals NHS Foundation

Trust, this application will automatically analyse prostate MRI scans and return data and analysis of the scan to PACS. We are working to complete the necessary governance associated with this project, before completing training for consultants, testing the application and then entering full activation of the tool.

CAMRIN has successfully completed another pilot for the **Radiology Reporting Collaborative (RRC)**. The pilot lasted for two weeks, the aim of this was to test the processes involved with the RRC. CAMRIN is now evaluating the pilots and completing reports to summarise the lesson learned, as well as engaging stakeholders further to plan how the RRC can be expanded to include more trusts and reporters.



WORKFORCE

What's happening in the Workforce Programme:

There are lots of things happening at the moment, working alongside Cheshire and Merseyside Radiology Managers, Diagnostics Workforce Group, North West Imaging Workforce Group and North West Imaging Academy (NWIA), we have agreed the workforce priorities for Cheshire and Merseyside over the year ahead.

- Working with the North West (NW) regional team, Liverpool Women's Hospital and Alder Hey, have both led the way with Ultrasound STAY conversations
- Jenni Bird is leading on exploring Hybrid roles
- Carol Cunningham is leading on International Recruitment

- Yvonne Shanks is working with Colette Higham on Staff Resources Vs activity, which will add to the CAMRIN workforce plan
- Gill Holroyd has moved to a new role as Clinical Lead at NWIA and is liaising with NW workforce leads to develop the future courses, CPD we need to support staff development, and workforce requirements.

Modality Leads group meetings have started, with Quality Managers providing the 'guinea pig' first session (thank you to all those involved). These meetings will be an informal opportunity to discuss current issues, share best practice and input into CAMRIN projects. Please contact Yvonne.shanks@aintree.nhs.uk if you are a modality lead and haven't yet had an invite to a meeting.



DIGITAL DELIVERY

Trusts have been busy with the re engagement to stakeholders at Alder Hey, Liverpool Heart and Chest and Warrington Teaching Hospital to roll out **PACS based reporting**. Liverpool Heart and Chest has now established PBR in over 70% of end users and Warrington are on the same track with 50% of Sonographers and seven consultants, with a move there from Digital Dictation to Voice Recognition, a marvellous achievement. Alder Hey are currently training all their staff over the July period and expect to go live across the site in early August. We are really keen to get momentum for the project and move at pace to on-board staff at these sites. The Philips Vue PACS Based Reporting solution will enhance the regions shared workflow and the delivery of Philips Orchestrator, to enable automated work list. It also enables standardisation across the region with a much richer and improved reporting capability.

The **Cardiology Digital Solution** while is not strictly radiology it is being implemented by the CAMRIN PMO, this is due to the experience the team has in Picture archiving communication software (PACS). Currently there has been a pilot of a central Philips PACS Vendor Neutral Archive for cardiology images that has been running for three years at LHCH, and Royal LUHFT. There is a proposal in development to gain support for all Trusts to pursue a collaborative approach to Cardiology Imaging, emulating the success we have had in radiology. The end goal is to expand a single solution across Cardiology at all Trusts across the region to utilise the CVIS and central Philips PACS solution to provide a central repository and a centralised booking and scheduling solution.

The second phase of the programme is now underway to on board Alder Hey and Liverpool Women's Hospital. This will bring together five key sites and support our strategic vision of cross site regional collaborative working. The two

sites should be joining the regional solution in the second half of 2023, at which point we will be looking to move all of the images onto the PACS cloud to enable seamless access to all of a patients images in one single place, this will provide easy access to the clinical team involved in the patients care.

Cheshire and Merseyside **Ologies PACS Solution** is a regional storage and viewing application, which allows clinical images such as medical photography to be stored as part of the patient record and accessed by clinical teams across Cheshire and Merseyside. This will remove the need for clinical images to be transferred between organisations.

The Trauma and Emergency Department and Podiatry at Liverpool University Hospitals are both now live with the solution. The project team have been working closely with the Tissue Viability teams at both The Walton Centre and Liverpool University Hospitals, Medical Photography (Aintree site) Liverpool University Hospitals, Medical Photography at Mersey and West Lancs, Burns and Plastics at Mersey and West Lancs on the final stages of testing. The teams are expected to go-live with the solution very soon.

Expressions of interest for phase two of the pilot have been received from several teams in Trusts across Cheshire and Merseyside. The project team are in the process of planning phase two. If you would also like to submit an expression of interest, please **get in touch with the CAMRIN team** directly.





Alexi Shenton
CAMRIN Programme Lead

GETTING IN TOUCH

Thank you for taking the time to read the bulletin today, please share with your colleagues. We are always looking for people to get involved in the network and help us to support the 11 Trusts who make up the network.

We welcome your involvement, comments, and ideas. If you have any feedback, would like to share ideas, an issue or priority which you feel should be taken into consideration for any of the workstreams.

The central CAMRIN programme management office would also like to come and visit your departments, so if you would like a visit please let us know.

Please don't hesitate to get in touch via:
camrin@liverpoolft.nhs.uk

